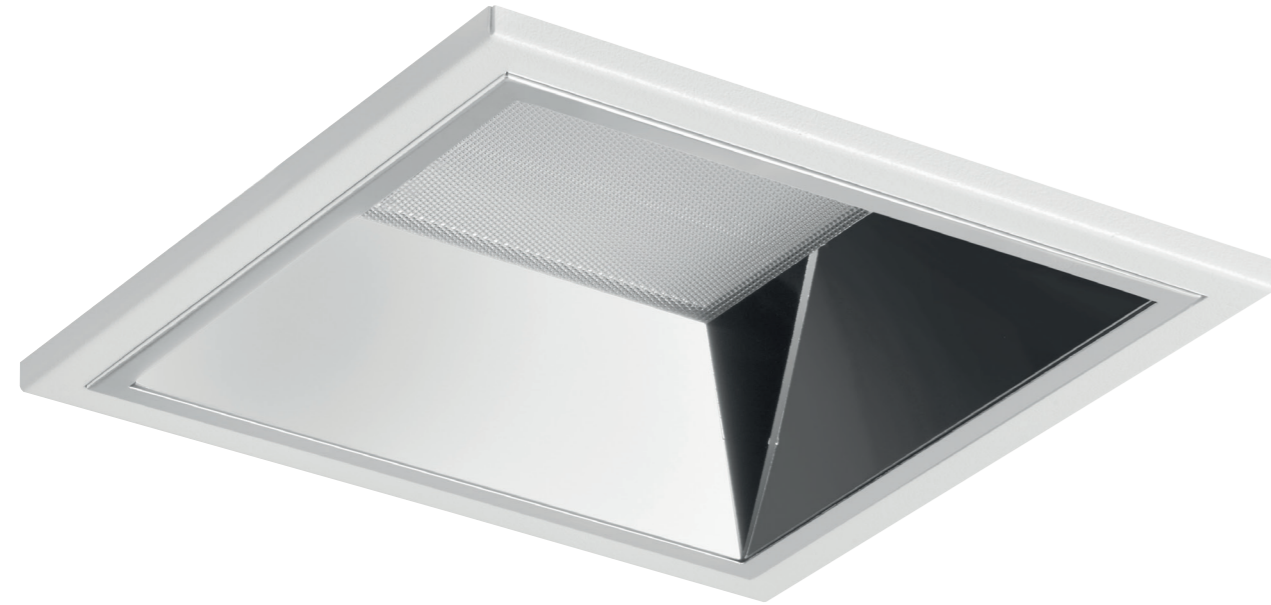
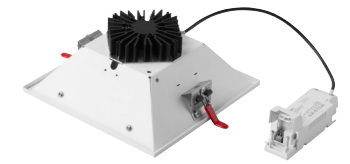
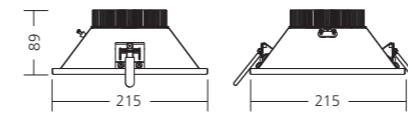
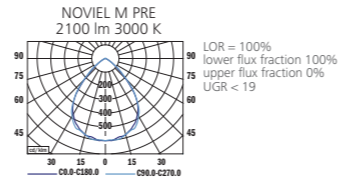


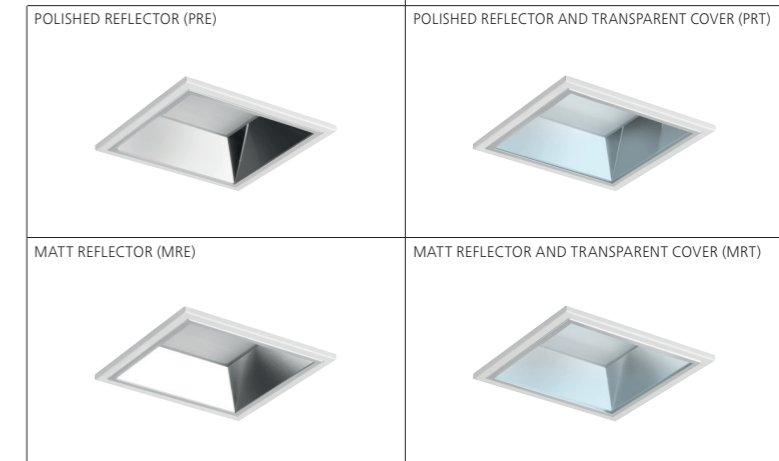
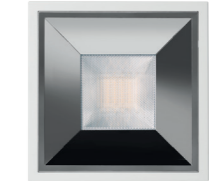
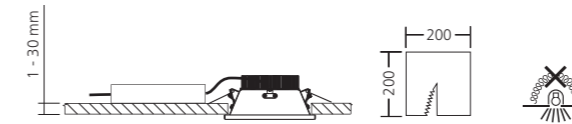
NOVIEL
POLISHED / MATT
LED



PHOTOMETRY



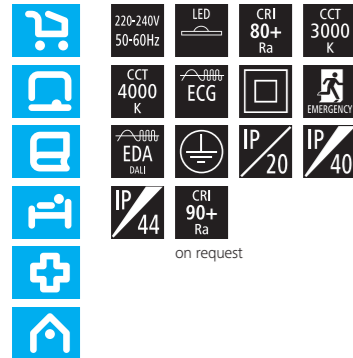
MOUNTING



TYPE	NET LUMEN OUTPUT (at Ta = 25 °C) (lm)	POWER CONSUMPTION (W)	SYSTEM EFFICACY (lm/W)	COLOUR RENDERING INDEX CRI (Ra)	CORRELATED COLOUR TEMPERATURE CCT (K)	BEAM ANGLE (C0-180, C90-270)	EMERGENCY UNIT 3H (lm)	WEIGHT (kg)	ORDER CODE					
									REFLECTOR			REFLECTOR + COVER		
									ECG	EDA	EM	ECG	EDA	EM
NOVIEL II M PRE/PRT	2150	19	113	80+	3000	80°	300	1.1	124049	124051	124057	124073	124075	124081
NOVIEL II M PRE/PRT	2250	19	118	80+	4000	80°	300	1.1	124050	124052	124058	124074	124076	124082
NOVIEL II M PRE/PRT	2750	24	115	80+	3000	80°	300	1.1	124053	124055	124059	124077	124079	124083
NOVIEL II M PRE/PRT	2850	24	119	80+	4000	80°	300	1.1	124054	124056	124060	124078	124080	124084
NOVIEL II M MRE/MRT	2150	19	113	80+	3000	80°	300	1.1	124061	124063	124069	124085	124087	124093
NOVIEL II M MRE/MRT	2250	19	118	80+	4000	80°	300	1.1	124062	124064	124070	124086	124088	124094
NOVIEL II M MRE/MRT	2750	24	115	80+	3000	80°	300	1.1	124065	124067	124071	124089	124091	124095
NOVIEL II M MRE/MRT	2850	24	119	80+	4000	80°	300	1.1	124066	124068	124072	124090	124092	124096

Luminous flux tolerance +/- 10%.

Noviel II M



EN

Mounting
Ceiling recessed
Optical system
Polished reflector (PRE)
Polished reflector + transparent cover (PRT)
Matt reflector (MRE)
Matt reflector + transparent cover (MRT)
Wiring
Electronic control gear FIX/DALI (ECG/EDA)
Emergency unit variant (3H, ECG)
Materials
Housing: sheet steel
Diffuser: microprismatic PMMA
Trim: sheet steel
Reflector: anodised aluminium
Cover: PMMA
Surface finish
Trim: white RAL 9003 (W03)
Service lifetime
100,000 hours/L90/B20 (ta 25°C)
Ambient temperature
From -20 °C to +35 °C
(from +5°C with EM unit)

DE

Montage
Einbauleuchte
Optisches System
Polierter Reflektor (PRE)
Polierter Reflektor + durchsichtige Abdeckung (PRT)
Matter Reflektor (MRE)
Matter Reflektor + durchsichtige Abdeckung (MRT)
Vorschaltgerät
Elektronisches Vorschaltgerät FIX/DALI (ECG/EDA)
Notbeleuchtung Variante (3H, ECG)
Material
Körper: Stahlblech
Diffusor: mikroprismatisches PMMA
Einfassung: Stahlblech
Reflektor: eloxiertes Aluminium
Abdeckung: PMMA
Oberflächenveredelung
Einfassung: weiss RAL 9003 (W03)
Lebensdauer
100,000 Stunden/L90/B20 (ta 25°C)
Umgebungstemperatur
Von -20 °C bis +35 °C
(von +5°C mit Notbeleuchtung)

FR

Montage
Plafonnier encastrable
Système optique
Réflecteur poli (PRE)
Leštény reflektor + transparentný kryt (PRT)
Matný reflektor (MRE)
Matný reflektor + transparentný kryt (MRT)
Équipement électrique
Ballast électronique FIX/DALI (ECG/EDA)
Variante de l'unité de secours (3H, ECG)
Matériels
Corps: tôle d'acier
Diffusor: PMMA microprismatique
Obruč: ocelový plech
Reflektor: aluminium anodisé
Couverture: PMMA
Finition de surface
Mouluře: blanc RAL 9003 (W03)
Durée de vie utile
100,000 heures/L90/B20 (ta 25°C)
Température ambiante
De -20 °C à +35 °C
(de +5°C avec l'unité de secours)

SK

Montáž
Vsaďený
Optický systém
Leštény reflektor (PRE)
Leštény reflektor + transparentný kryt (PRT)
Matný reflektor (MRE)
Matný reflektor + transparentný kryt (MRT)
Elektrická výbava
Elektronický predradník FIX/DALI (ECG/EDA)
Varianta s núdzovou jednotkou (3H, ECG)
Material
Teleso: oceľový plech
Difúzor: mikroprizmatický PMMA
Obruč: ocelový plech
Reflektor: anodizovaný hliník
Kryt: PMMA
Povrchová úprava
Obruč: biela RAL 9003 (W03)
Servisná životnosť
100,000 hodín/L90/B20 (ta 25°C)
Teplota okolia
Od -20 °C do +35 °C
(od +5°C s núdzovou jednotkou)

ES

Montaje
Empotradas en el techo
Sistema óptico
Reflector pulido (PRE)
Reflector pulido + cubierta transparente (PRT)
Reflector mate (MRE)
Reflector mate + cubierta transparente (MRT)
Cableado
Equipo de control electrónico FIX/DALI (ECG/EDA)
Variante unidad de emergencia (3H, ECG)
Material
Cuerpo: lámina de acero
Difusor: microprismático PMMA
Reborde: lámina de acero
Reflector: aluminio anodizado
Cubierta: PMMA
Tratamiento de la superficie
Reborde: blanco RAL 9003 (W03)
Vida útil
100,000 horas/L90/B20 (ta 25°C)
Temperatura ambiente
Desde -20 °C a +35 °C
(desde +5°C con unidad de emergencia)

IT

Installazione
Ad incasso a soffitto
Sistema ottico
Riflettore lucido (PRE)
Riflettore lucido + copertura trasparente (PRT)
Riflettore opaco (MRE)
Riflettore opaco + copertura trasparente (MRT)
Cablaggio
Ballast elettronico FIX/DALI (ECG/EDA)
Variante unità di emergenza (3H, ECG)
Materiali
Corpo: lamina d'acciaio
Diffusore: microprisma PMMA
Profilo: lamina d'acciaio
Riflettore: alluminio anodizzato
Copertura: PMMA
Finitura
Profilo: bianco RAL 9003 (W03)
Durata di vita
100,000 ore/L90/B20 (ta 25°C)
Temperatura d'ambiente
Da -20 °C a +35 °C
(da +5°C con unità di emergenza)

RU

Установка
Потолочная встроенная
Оптическая система
Шлифованный отражатель (PRE)
Шлифованный отражатель + чистая крышка (PRT)
Матовый отражатель (MRE)
Матовый отражатель + чистая крышка (MRT)
Электрическое оснащение
Электронный аппарат FIX/DALI (ECG/EDA)
Вариант аварийного освещения (3H, ECG)
Материал
Корпус: листовая сталь
Рассеиватель: микроприз. полиметилметакрилат
Накладка: листовая сталь
Отражатель: анодированный алюминий
Крышка: полиметилметакрилат
Отделка поверхности
Накладка: белый RAL 9003 (W03)
Срок службы
100,000 часов/L90/B20 (ta 25°C)
Температура окружающей среды
От -20 °C до +35 °C
(от +5°C с аварийного освещения)



THE MANUFACTURER CONTINUES TO DEVELOP PRODUCTS THROUGHOUT THEIR LIFETIME. THEREFORE, THE COMPANY RESERVES THE RIGHT TO MODIFY MATERIALS, COMPONENTS, AND TECHNICAL PARAMETERS WITHOUT NOTICE. LUMINOUS OUTPUT AND ELECTRICAL LOAD HAVE AN INITIAL TOLERANCE OF +/- 10 % FROM NOMINAL. FAILURE OF ONE LED LIGHT POINT WITHIN A LUMINAIRE DOES NOT IMPAIR FUNCTIONAL PERFORMANCE AND SO IS NOT CLASSIFIED AS REASON FOR COMPLAINT.

COMMERCIAL LED LUMINAIRES