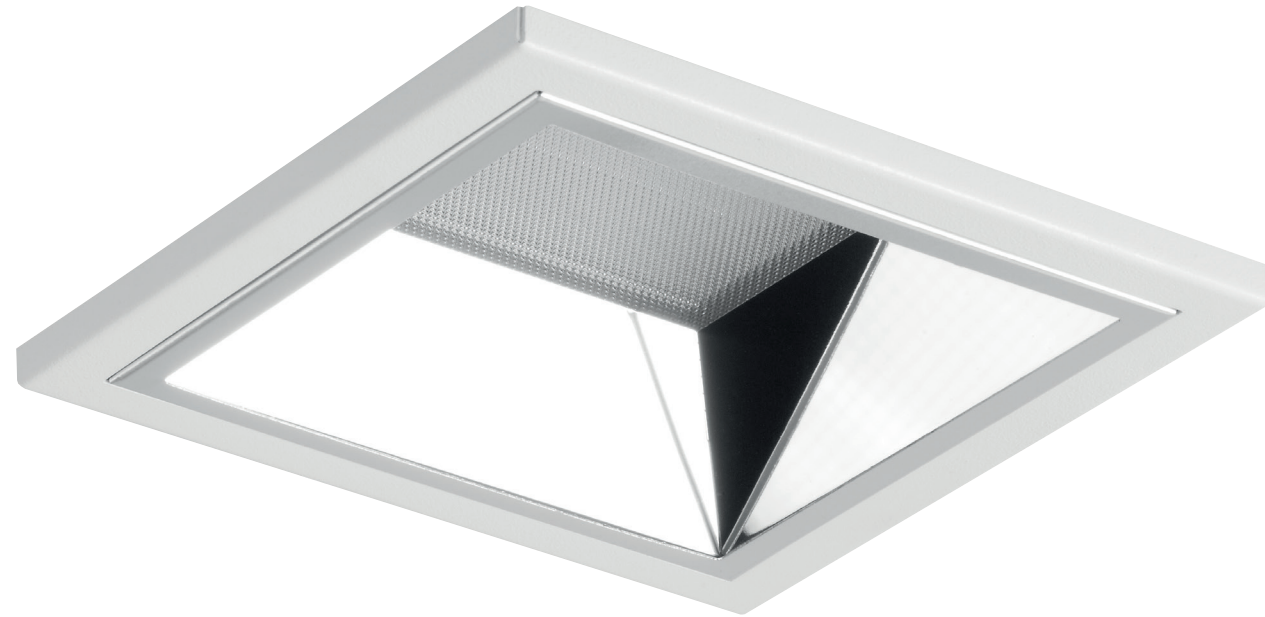
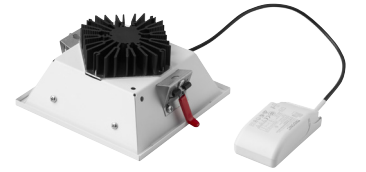
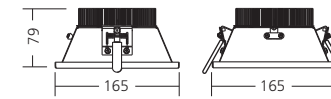
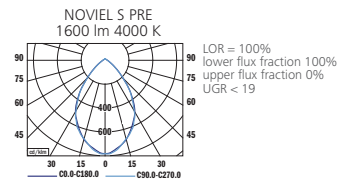


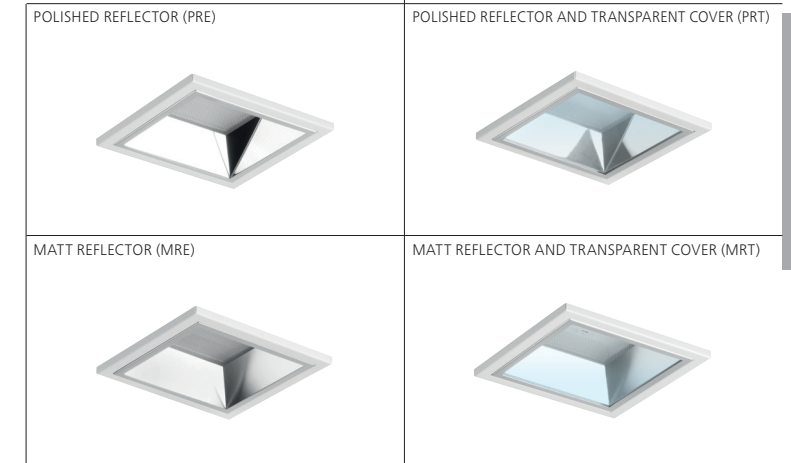
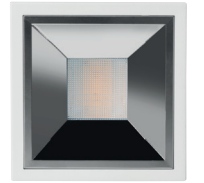
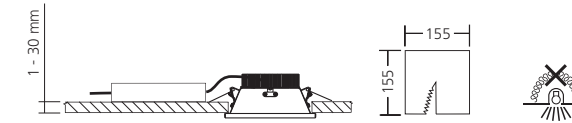
NOVIEL
POLISHED / MATT
LED



PHOTOMETRY



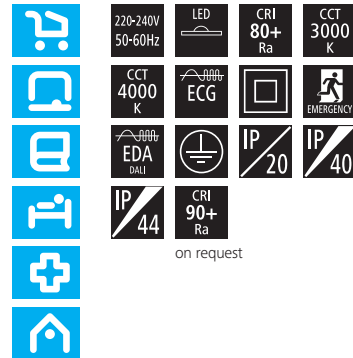
MOUNTING



Noviel II S

TYPE	NET LUMEN OUTPUT (at Ta = 25 °C) (lm)	POWER CONSUMPTION (W)	SYSTEM EFFICACY (lm/W)	COLOUR RENDERING INDEX CRI (Ra)	CORRELATED COLOUR TEMPERATURE CCT (K)	BEAM ANGLE (C0-180, C90-270)	EMERGENCY UNIT 3H (lm)	WEIGHT (kg)	ORDER CODE					
									REFLECTOR			REFLECTOR + COVER		
									ECG	EDA	EM	ECG	EDA	EM
NOVEL II S PRE/PRT	1650	15	110	80+	3000	70°	300	0.9	124001	124003	124009	124025	124027	124033
NOVEL II S PRE/PRT	1750	15	117	80+	4000	70°	300	0.9	124002	124004	124010	124026	124028	124034
NOVEL II S PRE/PRT	2150	19	113	80+	3000	70°	300	0.9	124005	124007	124011	124029	124031	124035
NOVEL II S PRE/PRT	2250	19	118	80+	4000	70°	300	0.9	124006	124008	124012	124030	124032	124036
NOVEL II S MRE/MRT	1650	15	110	80+	3000	70°	300	0.9	124013	124015	124021	124037	124039	124045
NOVEL II S MRE/MRT	1750	15	117	80+	4000	70°	300	0.9	124014	124016	124022	124038	124040	124046
NOVEL II S MRE/MRT	2150	19	113	80+	3000	70°	300	0.9	124017	124019	124023	124041	124043	124047
NOVEL II S MRE/MRT	2250	19	118	80+	4000	70°	300	0.9	124018	124020	124024	124042	124044	124048

Luminous flux tolerance +/- 10%.



EN

Mounting
Ceiling recessed
Optical system
Polished reflector (PRE)
Polished reflector + transparent cover (PRT)
Matt reflector (MRE)
Matt reflector + transparent cover (MRT)
Wiring
Electronic control gear FIX/DALI (ECG/EDA)
Emergency unit variant (3H, ECG)
Materials
Housing: sheet steel
Diffuser: microprismatic PMMA
Trim: sheet steel
Reflector: anodised aluminium
Cover: PMMA
Surface finish
Trim: white RAL 9003 (W03)
Service lifetime
100,000 hours/L90/B20 (ta 25°C)
Ambient temperature
From -20 °C to +35 °C
(from +5°C with EM unit)

DE

Montage
Einbauleuchte
Optisches System
Polierter Reflektor (PRE)
Polierter Reflektor + durchsichtige Abdeckung (PRT)
Matter Reflektor (MRE)
Matter Reflektor + durchsichtige Abdeckung (MRT)
Vorschaltgerät
Elektronisches Vorschaltgerät FIX/DALI (ECG/EDA)
Notbeleuchtung Variante (3H, ECG)
Material
Körper: Stahlblech
Diffusor: mikroprismatisches PMMA
Einfassung: Stahlblech
Reflektor: eloxiertes Aluminium
Abdeckung: PMMA
Oberflächenveredelung
Einfassung: weiss RAL 9003 (W03)
Lebensdauer
100,000 Stunden/L90/B20 (ta 25°C)
Umgebungstemperatur
Von -20 °C bis +35 °C
(von +5°C mit Notbeleuchtung)

FR

Montage
Plafonnier encastrable
Système optique
Réflecteur poli (PRE)
Réflecteur poli + couvercle transparente (PRT)
Réflecteur mat (MRE)
Réflecteur mat + couvercle transparente (MRT)
Équipement électrique
Ballast électronique FIX/DALI (ECG/EDA)
Variante de l'unité de secours (3H, ECG)
Matériels
Corps: tôle d'acier
Diffuseur: PMMA microprismatique
Oubruç: ocellový plech
Réflecteur: aluminium anodisé
Couvercle: PMMA
Finition de surface
Mouluure: blanc RAL 9003 (W03)
Durée de vie utile
100,000 heures/L90/B20 (ta 25°C)
Température ambiante
De -20 °C à +35 °C
(de +5°C avec l'unité de secours)

SK

Montáž
Vsadený
Optický systém
Leštený reflektor (PRE)
Leštený reflektor + transparentný kryt (PRT)
Matný reflektor (MRE)
Matný reflektor + transparentný kryt (MRT)
Elektrická výbava
Elektronický predradník FIX/DALI (ECG/EDA)
Varianta s núdzovou jednotkou (3H, ECG)
Material
Telo: oceľový plech
Difúzor: mikroprizmatický PMMA
Obruč: oceľový plech
Reflektor: anodizovaný hliník
Kryt: PMMA
Povrchová úprava
Obruč: biela RAL 9003 (W03)
Servisná životnosť
100,000 hodín/L90/B20 (ta 25°C)
Teplota okolia
Od -20 °C do +35 °C
(od +5°C s núdzovou jednotkou)

ES

Montaje
Empotradas en el techo
Sistema óptico
Reflector pulido (PRE)
Reflector pulido + cubierta transparente (PRT)
Reflector mate (MRE)
Reflector mate + cubierta transparente (MRT)
Cableado
Equipo de control electrónico FIX/DALI (ECG/EDA)
Variante unidad de emergencia (3H, ECG)
Material
Cuerpo: lámina de acero
Difusor: microprismático PMMA
Reborde: lámina de acero
Reflector: aluminio anodizado
Cubierta: PMMA
Tratamiento de la superficie
Reborde: blanco RAL 9003 (W03)
Vida útil
100,000 horas/L90/B20 (ta 25°C)
Temperatura ambiente
Desde -20 °C a +35 °C
(desde +5°C con unidad de emergencia)

IT

Installazione
Ad incasso a soffitto
Sistema ottico
Riflettore lucido (PRE)
Riflettore lucido + copertura trasparente (PRT)
Riflettore opaco (MRE)
Riflettore opaco + copertura trasparente (MRT)
Cablaggio
Ballast elettronico FIX/DALI (ECG/EDA)
Variante unità di emergenza (3H, ECG)
Materiali
Corpo: lamina d'acciaio
Diffusore: microprisma PMMA
Profilo: lamina d'acciaio
Riflettore: alluminio anodizzato
Copertura: PMMA
Finitura
Profilo: bianco RAL 9003 (W03)
Durata di vita
100,000 ore/L90/B20 (ta 25°C)
Temperatura d'ambiente
Da -20 °C a +35 °C
(da +5°C con unità di emergenza)

RU

Установка
Потолочная встраиваемая
Оптическая система
Шлифованный отражатель (PRE)
Шлифованный отражатель + чистая крышка (PRT)
Матовый отражатель (MRE)
Матовый отражатель + чистая крышка (MRT)
Электрическое оснащение
Электронный аппарат FIX/DALI (ECG/EDA)
Блок аварийного освещения (3H, ECG)
Материал
Корпус: листовая сталь
Рассеиватель: микроприз. полиметилметакрилат
Накладка: листовая сталь
Отражатель: анодированный алюминий
Крышка: полиметилметакрилат
Отделка поверхности
Накладка: белый RAL 9003 (W03)
Срок службы
100,000 часов/L90/B20 (ta 25°C)
Температура окружающей среды
От -20 °C до +35 °C
(от +5°C с аварийного освещения)



THE MANUFACTURER CONTINUES TO DEVELOP PRODUCTS THROUGHOUT THEIR LIFETIME. THEREFORE, THE COMPANY RESERVES THE RIGHT TO MODIFY MATERIALS, COMPONENTS, AND TECHNICAL PARAMETERS WITHOUT NOTICE. LUMINOUS OUTPUT AND ELECTRICAL LOAD HAVE AN INITIAL TOLERANCE OF +/- 10% FROM NOMINAL. FAILURE OF ONE LED LIGHT POINT WITHIN A LUMINAIRE DOES NOT IMPAIR FUNCTIONAL PERFORMANCE AND SO IS NOT CLASSIFIED AS REASON FOR COMPLAINT.